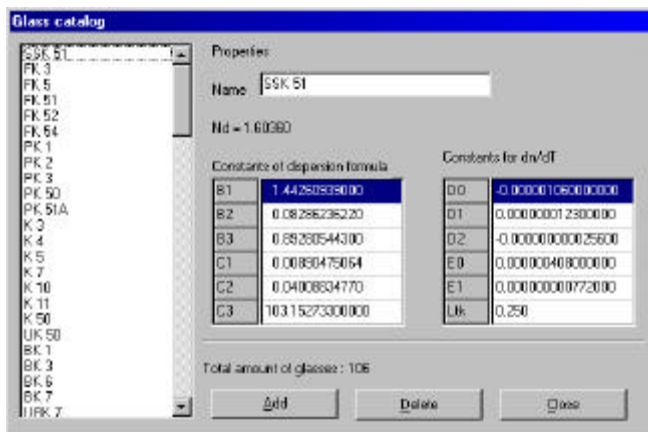
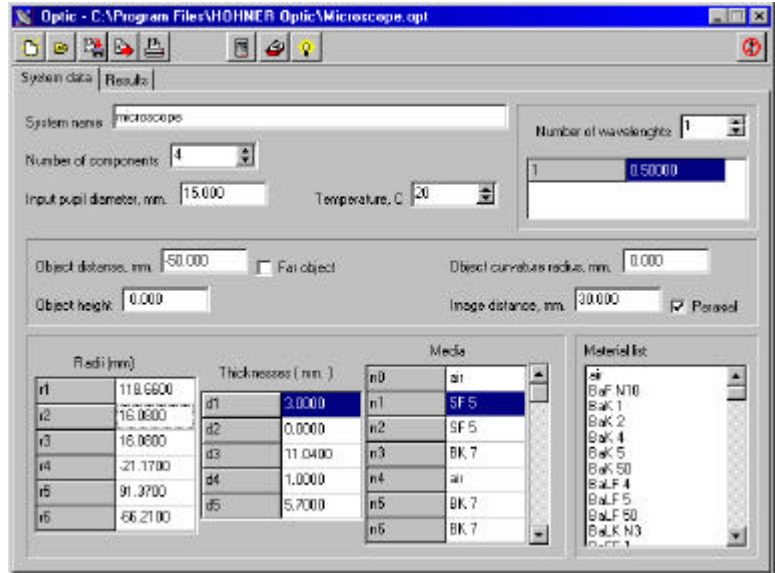


The HOHNER OPTIC is a powerful inexpensive program designed to estimate aberrations and quality of lens optical systems. The program performs 260 ray tracing at each wavelength set by the user. In the image plane, it calculates paraxial characteristics, geometrical aberrations, wave aberrations. Also it plots optical scheme and positions of points for each ray traced through the optical system.



The glass catalog included in the HOHNER OPTIC program contents of more than 100 standard glasses made by SCHOTT Glass Co. To add a customer glass, its constants of the dispersion formula and the formula dn/dT must be known.

Other features:

- any wavelengths of radiation
- any temperature
- object can have non-zero curvature
- customer media and optical materials can be put into the glass catalog
- cardinal elements of optical system are shown
- each ray's tracing data are stored in separate text file

